



CLITHEROE PARISH CHURCH 1122-1972

# CLITHEROE PARISH CHURCH ORGAN SOCIETY

*Twelfth Season - 1972 - 1973*

Non-Members 35p

Students & Pensioners 20p

SI

atti,

SI

at

SEASON 1972-73

## Anniversary Recital

(Recital 102)

to commemorate the completion of the  
Rebuilding of the Organ in the Autumn  
of 1961.

Dr. MARILYN MASON

Faculty, University of Michigan, U.S.A.

SATURDAY, SEPTEMBER 30th, 1972  
at 8-00 p.m.

Dr. Mason was the first American woman to play  
in Westminster Abbey, when she represented the  
United States at the International Congress of  
Organists in 1957.

Programme will include

Toccata, Adagio and Fugue in C ..... J. S. Bach  
Pastorale ..... Roger Ducasse  
As well as music by Dupré and other composers

---

## EXHIBITION

The Anniversary Recital will be followed by  
an exhibition of music for organ, piano, recorder,  
etc., presented by Messrs. Ernest Stuttard Ltd. of  
Burnley.

---

(RECITAL 103)

WEDNESDAY, NOVEMBER 29th, 1972  
at 8-00 p.m.

JOHN CULLEN

Director of Music, Tonbridge School

Programme will include

Prelude and Fugue in D Major ..... J. S. Bach  
Prelude and Fugue on B.A.C.H. .... F. Liszt

## Anniversary Recital

(Recital 102)

to commemorate the completion of the  
Rebuilding of the Organ in the Autumn  
of 1961.

Dr. MARILYN MASON  
Faculty, University of Michigan, U.S.A.  
SATURDAY, SEPTEMBER 30th, 1972  
at 8-00 p.m.

### PROGRAMME

TWO SONATAS

SONATA PER ORGANO

SONATA DE CLARINES

MAGNIFICAT DU HUITIEME TON EN SOL MAJEUR

TOCCATA ADAGIO and FUGUE

\*\*\*\*\*

PASTORALE

Two Pieces. (a) on " Brother James' Air "

(b) Carol-Prelude on "GREENSLEEVES"

VARIATIONS ON THE AUSTRIAN HYMN

JOSE LIDON (1752-1827)

GIOVANNI BATTISTA PERGOLESI  
(1710-1736).

ANTONIO SOLER (1729-1783)

LE CLERC.

J.S. BACH (1685- 1750)

JEAN.J.A. ROGER-DUCASSE  
(1873-1954)

SEARLE WRIGHT

JOHN.K. PAINE (1839-1906)

---

TWO SONATAS

JOSE LIDON (1752-1787).

The Spanish organ composers of the 17th and 18th centuries had a distinctive style of their own, but give the impression that they were under the influence of the famous Italian composer Domenico Scarlatti. Many of Lidon's pieces are in binary form in the style of the "sonatas" of Scarlatti, dividing into approximately two equal halves with a break at the end of the first part.

SONATA PER ORGANO

GIOVANNI BATTISTA PERGOLESI  
(1710-1736).

An Italian composer who during his brief lifetime composed much music including the famous opera "La Serva Padronna"; he also wrote fourteen other operas, a quantity of church music including the famous Stabat Mater and one organ sonata.

SONATA DE CLARINES

ANTONIO SOLER (1729-1783)

A. Soler called himself a disciple of Domenico Scarlatti who lived in Madrid from 1729 to 1757, and his sonatas for the harpsichord (of which about 65 have survived) show the influence of the Italian Keyboard Master. A. Soler was choirmaster at Lerida Cathedral, and later organist at the royal palace-abbey-mausoleum of St. Laurence of the Escorial. In the transepts of this cathedral-sized church are two fine organs, for which Soler composed his Six Concerti for two organs, one of which can be heard in the Recital on April 28th 1973 played by Charles Myers and Gordon Thorne.

A. Soler also composed much church music, incidental music for plays and chamber music.

MAGNIFICAT DU HUITIEME TON EN SOL MAJEUR

LE CLERC

Plein Jeu - Duo - Jeu de clarion - Flutte - Musette - Grand Jeu.

The 'Magnificat' (Hymn of the Virgin) comes from St. Luke's Gospel. Although it is usually sung, the practice of performing alternate verses with the organ began in the 17th century. Because there were twelve verses in the 'Magnificat', composers would write six verses for organ alone. Here Le Clerc utilises the 8th tone as his melodic source. The work was obtained from the British Museum and edited for performance by Marilyn Mason.

TOCCATA, ADAGIO and FUGUE in C, BWV 564.

J.S. BACH (1685-1759).

This composition is distinctive among the Preludes and Fugues of Bach because of its three independent movements. The first movement is a brilliant and ornate toccata; the second, an adagio which contains a melody of unusual beauty over a striding pedal figure; and the third, a fugue, which in its melodic direction and commanding rhythm, carries the work to a sweeping finish.

PASTORALE (1909)

JEAN. J. A. ROGER-DUCASSE

"The Pastorale for organ, written (1873-1954) in 1909 is dedicated to Nadia Boulanger, and was given its first performance on April 20th 1910, by Alexander Guilmant. It is a work of charming and graceful construction, and the reflective mood which pervades throughout captivates irresistably. The sonority attained through the registration, the various canons (in two, three and four parts, distributed among the manuals in different rhythms), and the organistic writing, are all exquisite. The end, with its attenuated feeling, is of exceeding beauty. One regrets this charming pastorale is almost inaccessible because of its difficulty of execution.. The intricate writing and the registrational demands, to which many instruments cannot do justice" ('Roger-Ducasse, Le Musicien-L'Oeuvre' by L. Cellier).

TWO PIECES (a) An arrangement of "BROTHER JAMES' AIR" SEARLE WRIGHT.  
(b) Carol-Prelude on "GREENSLEEVES"

The composer of these pieces is organist-choirmaster of St. Paul's Chapel, Columbia University, New York City.

VARIATIONS ON THE AUSTRIAN HYMN

J.K. PAINE  
(1839-1906)

John Knowles Paine received much of his training in this country; in 1875 he was appointed Professor of Music at Harvard University, being the first incumbent of a chair of music in an American University. These Variations were written in 1860. The theme is stated, followed by four variations and concluding with a fugue.

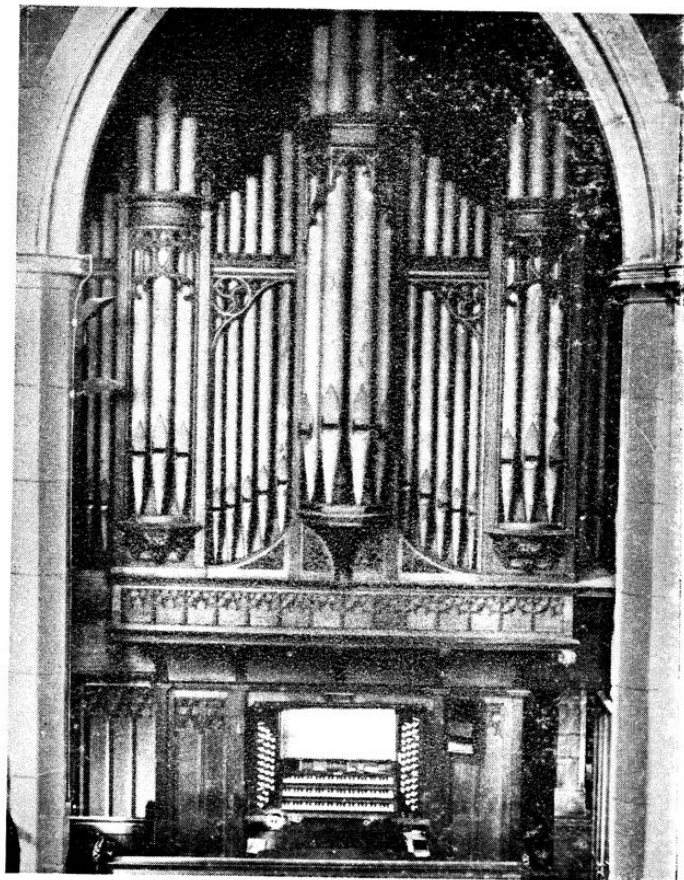
---

All those who have attended this recital are invited to meet this evening's distinguished soloist, and to view the Exhibition of Music in the Parish Hall (across the road) after the recital. Tea and Biscuits will be available for a nominal sum.

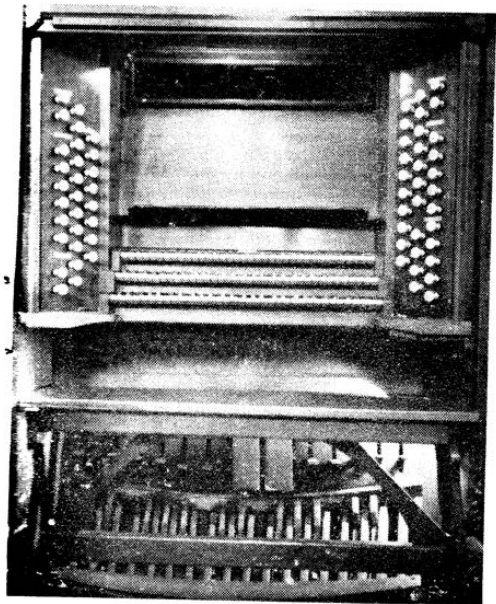
---



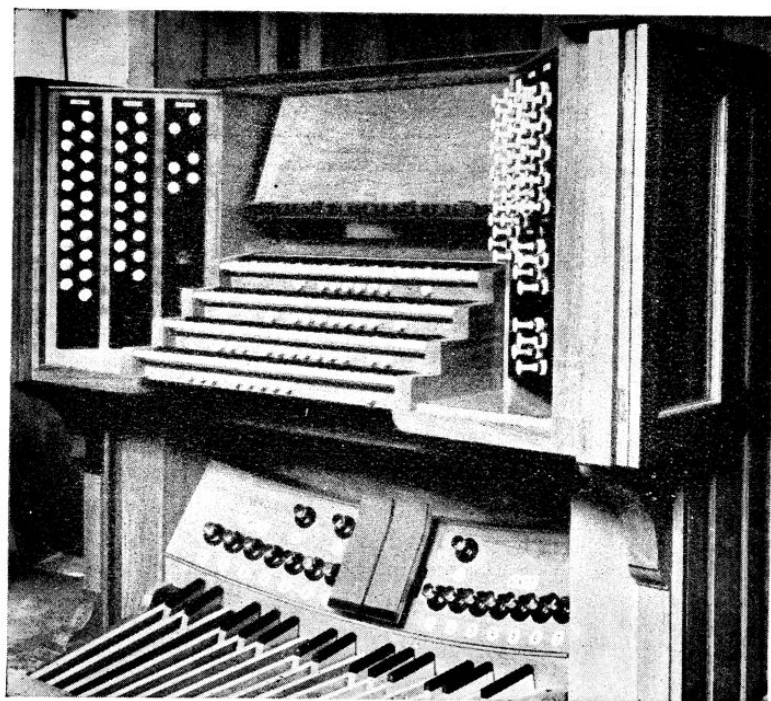
*Dr. Marilyn Mason,  
Faculty, University of Michigan, U.S.A.*



*The Organ of Clitheroe Parish Church  
prior to the rebuild of 1961*



*(Above) The Binn's Console of Clitheroe  
Parish Church Organ 1913-1961*



*(Right) The 1961 Nicholson detached console*